

85-82

KEITH AND SCHNARS, P.A.
ENGINEERS, PLANNERS, SURVEYORS
1101 S.W. 11th Street
Fort Lauderdale, Florida

TIMBERWALK SECTION TWO

A PORTION OF LOGGERS RUN A RD.
BEING A RESUBDIVISION OF A PORTION OF TRACT 6
BOUNDARY PLAT OF ORIOLE COUNTRY (P.B. 32, PGS. 175-180)
SECTION 26, TOWNSHIP 47 SOUTH, RANGE 41 EAST
PALM BEACH COUNTY, FLORIDA

58

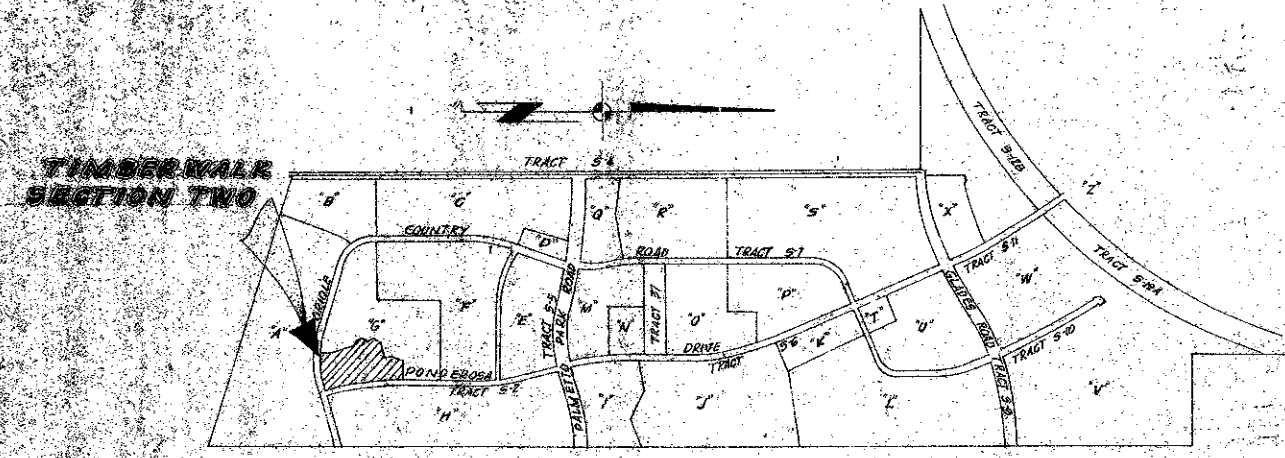
STATE OF FLORIDA
COUNTY OF PALM BEACH
THIS PLAT WAS FILED FOR
RECORD AT 10:51 AM THE
25 DAY OF September
1978, AND DULY RECORDED
IN PLAT BOOK 32 ON PAGES
58 & 59
JOHN B. DONKLE
CLERK OF CIRCUIT COURT
John B. Donkle

OWNER'S ACKNOWLEDGMENT

I, ORIOLE HOMES CORP., a Florida Corporation, and severally
acknowledged to and before me that they executed such
instrument as said President and Assistant Secretary,
respectively of said corporation, and have the seal affixed to
the foregoing instrument in the corporate seal of said
corporation and that it was affixed to said instrument by
one and regular corporate authority, and that said
instrument is the true, full and correct copy of the original.

WITNESSE MY HAND AND OFFICIAL SEAL THIS 25th DAY OF September
AD 1978

MY COMMISSION EXPIRES
February 20, 1981
John G. Simmons
NOTARY PUBLIC



LOCATION SKETCH
(NOT TO SCALE)

DEDICATION

KNOW ALL MEN BY THESE PRESENTS THAT ORIOLE HOMES CORP., A FLORIDA CORPORATION, OWNER OF
THE LAND SHOWN HEREON BEING IN SECTION 26, TOWNSHIP 47 SOUTH, RANGE 41 EAST, PALM BEACH COUNTY,
FLORIDA, SHOWN HEREON AS TIMBERWALK SECTION TWO, DESCRIBED AS FOLLOWS:

A PORTION OF TRACT 6 - BOUNDARY PART OF ORIOLE COUNTRY, ACCORDING TO THE PLAT THEREOF AS
RECORDED IN PLAT BOOK 32, PAGES 175 THROUGH 180 OF THE PUBLIC RECORDS OF PALM BEACH COUNTY,
FLORIDA, DESCRIBED AS FOLLOWS:

COMMENCE AT THE NORTHEAST CORNER OF SAID TRACT 6; THENCE SOUTH 01°15'24" EAST, ALONG THE EAST
BOUNDARY OF SAID TRACT 6, 600.00 FEET TO THE POINT OF BEGINNING; THENCE CONTINUE SOUTH
01°15'24" EAST, ALONG SAID EAST BOUNDARY, 300.00 FEET; THENCE SOUTHEASTERLY ALONG THE ARC
OF A TANGENT CURVE, CONCAVE TO THE EAST, HAVING A RADIUS OF 1000.00 FEET, A DELTA OF 80°15'00",
AN ARC DISTANCE OF 600.00 FEET; THENCE TANGENT TO SAID CURVE, SOUTH 21°28'10" EAST, 100.00
FEET; THENCE SOUTH 21°28'10" WEST, 30.00 FEET TO A POINT ON THE SOUTHERLY BOUNDARY OF SAID
TRACT 6; THENCE SOUTH 01°15'24" WEST, ALONG SAID SOUTHERLY BOUNDARY, 90.00 FEET; THENCE
SOUTHWESTERLY ALONG THE ARC OF A TANGENT CURVE, CONCAVE TO THE NORTH, HAVING A RADIUS OF
1000.00 FEET, A DELTA OF 80°15'00", AN ARC DISTANCE OF 600.00 FEET; THENCE NORTH 81°24'45" EAST,
36.54 FEET; THENCE NORTH 11°28'36" EAST, 80.78 FEET; THENCE NORTHEASTERLY ALONG THE ARC OF A
TANGENT CURVE, CONCAVE TO THE WEST, HAVING A RADIUS OF 1000.00 FEET, A DELTA OF 80°15'00",
AN ARC DISTANCE OF 600.00 FEET; THENCE TANGENT TO SAID CURVE, SOUTH 88°58'50" WEST, 30.00
FEET TO A POINT ON THE ARC OF A NON-TANGENT CURVE, RADIAL LINE THROUGH SAID POINT, BEING
SOUTH 10°00'00" WEST; THENCE NORTHEASTERLY ALONG THE ARC OF SAID CURVE, CONCAVE TO THE EAST,
HAVING A RADIUS OF 1000.00 FEET, A DELTA OF 80°15'00", AN ARC DISTANCE OF 600.00 FEET; THENCE
ALONG A RADIAL LINE, EXTENDED LINE NORTH 81°24'45" WEST, 100.00 FEET; THENCE NORTH 81°24'45" EAST,
100.00 FEET; THENCE NORTH 69°14'55" EAST, 300.00 FEET; THENCE NORTH 20°28'10" WEST, 100.00 FEET;
THENCE NORTH 21°28'10" EAST, 100.00 FEET; THENCE NORTH 01°15'24" WEST, 300.00 FEET TO THE
POINT OF BEGINNING, SAID LANDS LING IN PALM BEACH COUNTY, FLORIDA.

HAS CAUSED THE SAME TO BE SURVEYED AND PLATTED AS SHOWN HEREON AND DOES HEREBY
DEDICATE AS FOLLOWS:

1. THE UTILITY AND DRAINAGE EASEMENTS, AS SHOWN HEREON, ARE HEREBY DEDICATED IN PERPETUITY
FOR THE CONSTRUCTION, OPERATION AND MAINTENANCE OF UTILITIES AND DRAINAGE FACILITIES.
2. PARCEL D-1, AS SHOWN HEREON, IS HEREBY DESIGNATED AS, AND DECLARED TO BE, "DRIVES" AS SUCH TERM
IS DEFINED IN THE REPLAT DECLARATION FOR TIMBERWALK RECORDED IN OFFICIAL RECORDS BOOK 3127
AT PAGE 215 OF THE PUBLIC RECORDS OF PALM BEACH COUNTY, FLORIDA (HEREINAFTER REFERRED TO AS
THE "TIMBERWALK REPLAT DECLARATION") AND SHALL BE CONVEYED TO TIMBERWALK ASSOCIATION, INC.,
A FLORIDA CORPORATION NOT FOR PROFIT (HEREINAFTER REFERRED TO AS THE "TIMBERWALK ASSOCIATION"),
IN ACCORDANCE WITH THE SAID TIMBERWALK REPLAT DECLARATION.
3. PARCELS P-1, P-2 AND P-3, AS SHOWN HEREON, ARE HEREBY DESIGNATED AS, AND DECLARED TO BE, "PARKING
AREAS" AS SUCH TERM IS DEFINED IN TIMBERWALK REPLAT DECLARATION AND SHALL BE CONVEYED TO THE
TIMBERWALK ASSOCIATION IN ACCORDANCE WITH THE SAID TIMBERWALK REPLAT DECLARATION.
4. PARCELS G-1 AND G-2, AS SHOWN HEREON, ARE HEREBY DESIGNATED AS, AND DECLARED TO BE, "GRASSED
AREAS" AS SUCH TERM IS DEFINED IN THE TIMBERWALK REPLAT DECLARATION AND SHALL BE CONVEYED TO
THE TIMBERWALK ASSOCIATION IN ACCORDANCE WITH THE SAID TIMBERWALK REPLAT DECLARATION.
5. THE STREET SHOWN HEREON AS PARCEL S-1 IS HEREBY DEDICATED TO THE BOARD OF COUNTY
COMMISSIONERS OF PALM BEACH COUNTY, FLORIDA, FOR THE PERPETUAL USE OF THE PUBLIC FOR PROPER
PURPOSES.
6. ACCESS CONTROL FACILITIES, AS SHOWN HEREON, ARE HEREBY DEDICATED TO THE BOARD OF COUNTY
COMMISSIONERS OF PALM BEACH COUNTY, FLORIDA, FOR THE CONTROL OF ACCESS TO AND FROM
A EASEMENT TRUCK TO ADJACENT LOTS SHOWN HEREON.
7. PARCEL E-1, AS SHOWN HEREON IS HEREBY DESIGNATED IN PERPETUITY TO LOGGERS RUN, INC., A FLORIDA
CORPORATION, AND FOR SUCCESSORS AND ASSIGNS FOR A SIGN AND ENTRY FEATURE FOR, AND
IN FULL RESPECT TO THE LANDS INCLUDED WITHIN THIS PLAT AS WELL AS ALL OTHER LANDS INCLUDED IN
LOGGERS RUN, INC. AS DEFINED IN THE ARTICLES OF INCORPORATION OF THE SAID LOGGERS RUN, INC. WITH
LOGGERS RUN, INC. HAVING THE RIGHT TO CONSTRUCT, MAINTAIN, REPAIR AND REPLACE THEREON, SUCH
FEATURES AS LOGGERS RUN, INC. SHALL FROM TIME TO TIME DETERMINE SUCH AS PERMANENT AND
8. REFERENCE TO THE LOGGERS RUN, INC. DECLARATION RECORDED IN OFFICIAL RECORDS BOOK 2783, PAGE 1
PALM BEACH COUNTY RECORDS.

DEDICATION (CONTINUED)

TEMPORARY SIGNS, DECORATIVE WALLS, FENCES AND OTHER STRUCTURES IN KEEPING WITH THE USE OF
SUCH PARCELS AS SUCH A SIGN AND ENTRY FEATURE, SAID PARCELS BEING THE PERPETUAL MAINTENANCE
OBLIGATION OF THE SAID LOGGERS RUN, INC.
PARCEL D-1, AS SHOWN HEREON, AND PARCELS P-1, P-2 AND P-3, AS SHOWN HEREON, ARE SUBJECT TO EASEMENTS
WHICH ARE HEREBY GRANTED AND IMPROVED THEREON IN FAVOR OF PALM BEACH COUNTY, TIMBERWALK ASSOCIATION, INC.
AND LOGGERS RUN, INC. AND THE DESIGNERS OF TIMBERWALK ASSOCIATION, INC. OR LOGGERS RUN, INC. FOR THE
CONSTRUCTION, OPERATION AND MAINTENANCE OF UNDERGROUND UTILITY AND DRAINAGE FACILITIES.

IN WITNESS WHEREOF THE SAID CORPORATION HAS CAUSED THESE PRESENTS TO BE SIGNED BY ITS PRESIDENT
AND ATTESTED BY ITS ASSISTANT SECRETARY AND ITS CORPORATE SEAL TO BE AFFIXED HERETO BY AND WITH
AUTHORITY OF ITS BOARD OF DIRECTORS THIS 25th DAY OF September AD 1978

ATTEST: *[Signature]*
PARCEL ASSISTANT SECRETARY
ORIOLE HOMES CORP.
R. D. Leary
R. D. LEARY, PRESIDENT

TITLE CERTIFICATION

STATE OF FLORIDA
COUNTY OF BROWARD }
WE STATE TITLE & ABSTRACT COMPANY, INC., A TITLE INSURANCE COMPANY DULY LICENSED IN THE
STATE OF FLORIDA, DO HEREBY CERTIFY THAT WE HAVE EXAMINED THE TITLE TO THE HEREON
DESCRIBED PROPERTY, THAT WE FIND THE TITLE TO THE PROPERTY IS VESTED IN ORIOLE HOMES CORP.,
THAT THE CURRENT TAXES HAVE BEEN PAID, THAT THE PROPERTY IS NOT ENCLUMBERED BY MORTGAGES.

DATE: Aug 30, 1978
[Signature] OFFICER OF TITLE INSURANCE COMPANY
LICENSED IN FLORIDA

SURVEYOR'S CERTIFICATE

THIS IS TO CERTIFY THAT TO THE BEST OF OUR KNOWLEDGE AND BELIEF, THE PLAT SHOWN
HEREON IS A TRUE AND CORRECT REPRESENTATION OF THE LANDS SURVEYED, THAT
PERMANENT REFERENCE MONUMENTS (PRM'S) HAVE BEEN SET AS INDICATED HEREON,
THAT PERMANENT CONTROL POINTS (PCP'S) WILL BE SET AS REQUIRED BY LAW, AND THAT THE
SURVEY WAS MADE UNDER OUR RESPONSIBLE DIRECTION AND SUPERVISION AND THAT THE SURVEY
DATA COMPLIES WITH ALL THE REQUIREMENTS OF CHAPTER 171, FLORIDA STATUTES, AND ORDINANCES
OF PALM BEACH COUNTY, FLORIDA.

KEITH AND SCHNARS, P.A.
ENGINEERS, PLANNERS, SURVEYORS

BY: *[Signature]*
THOMAS F. SCHNARS
PROFESSIONAL LAND SURVEYOR
FLORIDA REGISTRATION NO. 2325

0275-302

APPROVAL - PALM BEACH COUNTY, FLORIDA

BOARD OF COUNTY COMMISSIONERS
THIS PLAT IS HEREBY APPROVED FOR RECORD, THIS 25 DAY OF September, AD 1978

BY: *[Signature]*
CHAIRMAN, BILL BAYNE

COUNTY ENGINEER
THIS PLAT IS HEREBY APPROVED FOR RECORD, THIS 25 DAY OF Sept, AD 1978

BY: *[Signature]*
COUNTY ENGINEER

ATTEST: JOHN B. DONKLE, CLERK
BOARD OF COUNTY COMMISSIONERS

BY: *[Signature]*
DEPUTY CLERK